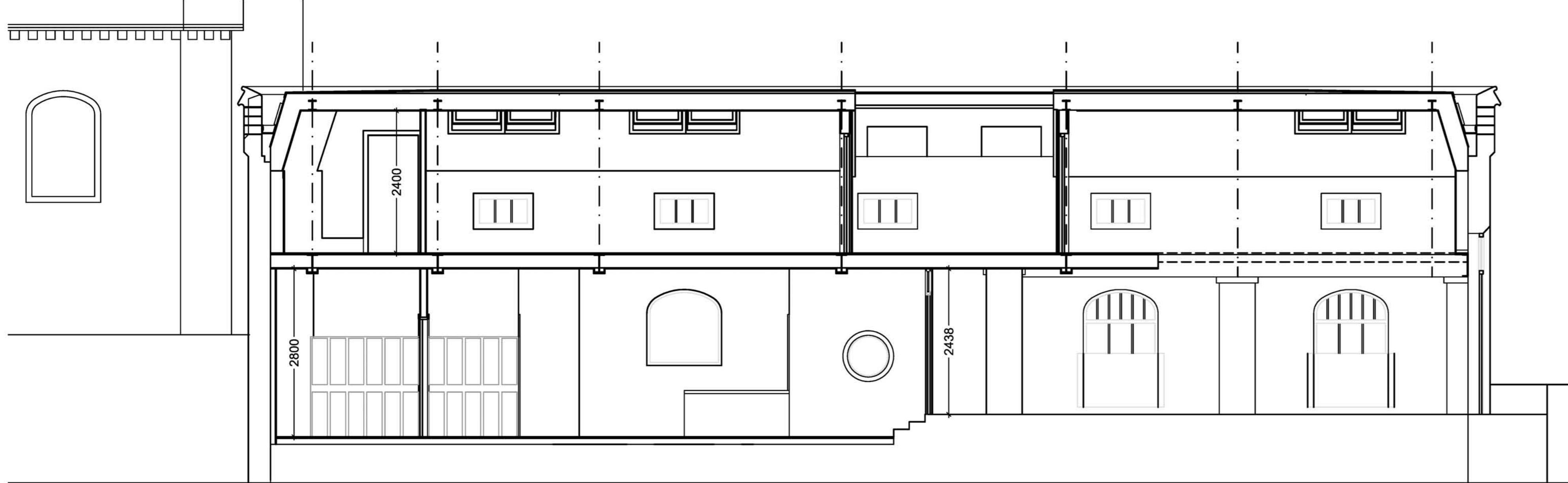
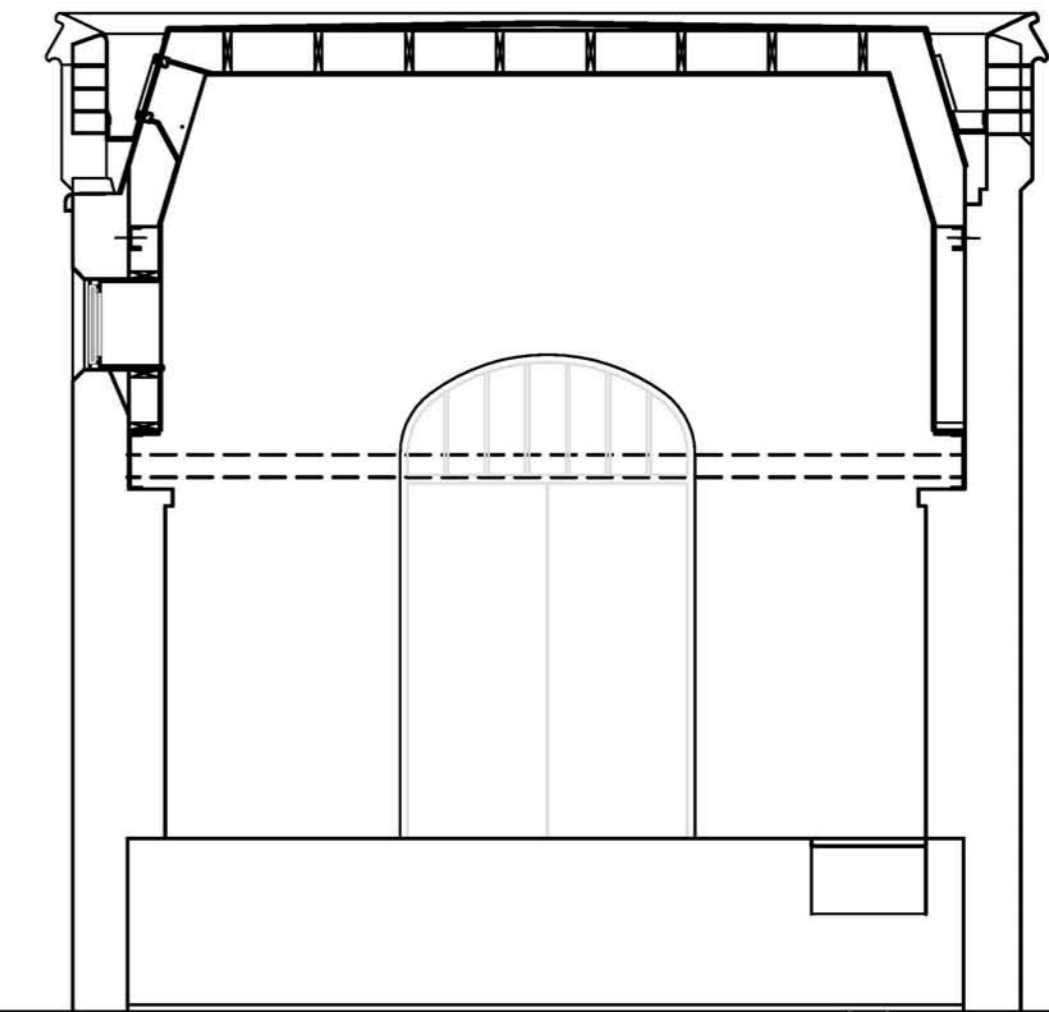


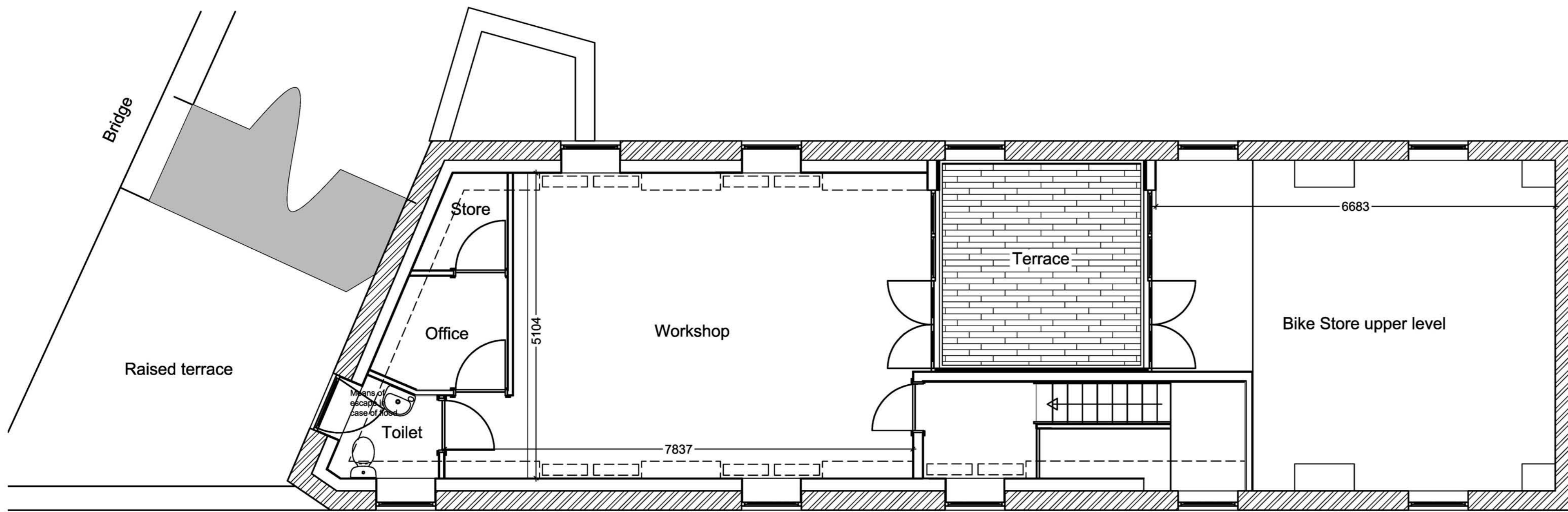
**NOTES:**  
Revision B- Layout of ground floor returned to original handing, door from stairwell to street access added. Bike store made double height, roof terrace and cafe area adjusted to suit.  
Revision C- Sales and GF office area moved, toilets/lockers amended. First floor cafe replaced with workshop including toilet and office. Doors added to terrace. Street entrance to stairwell amended.  
Revision D- Various amendments following discussion with CoYC Conservation Officer including lowering of roof, revision of access to stairwell.  
Revision D- Dimensions and details corrected following survey.  
Revision E- Construction detail added.



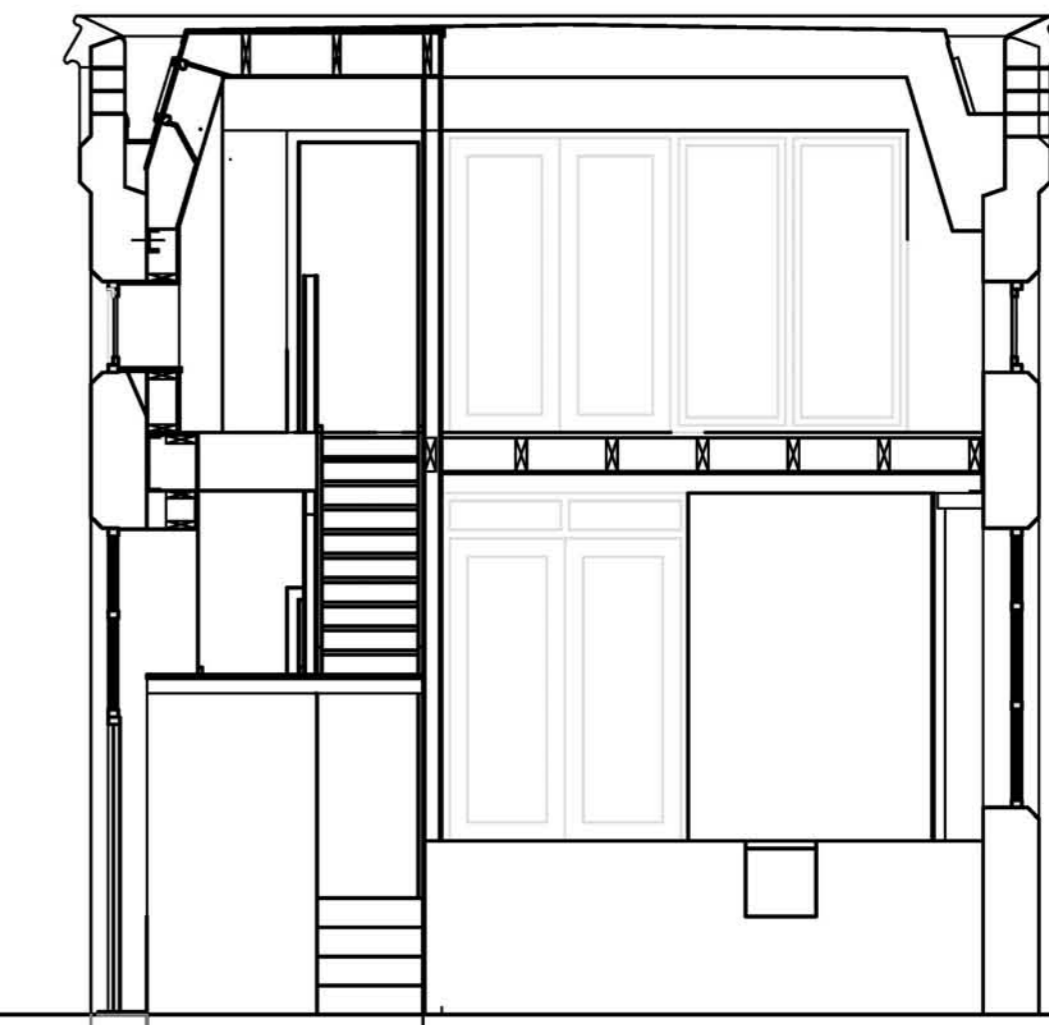
Section AA



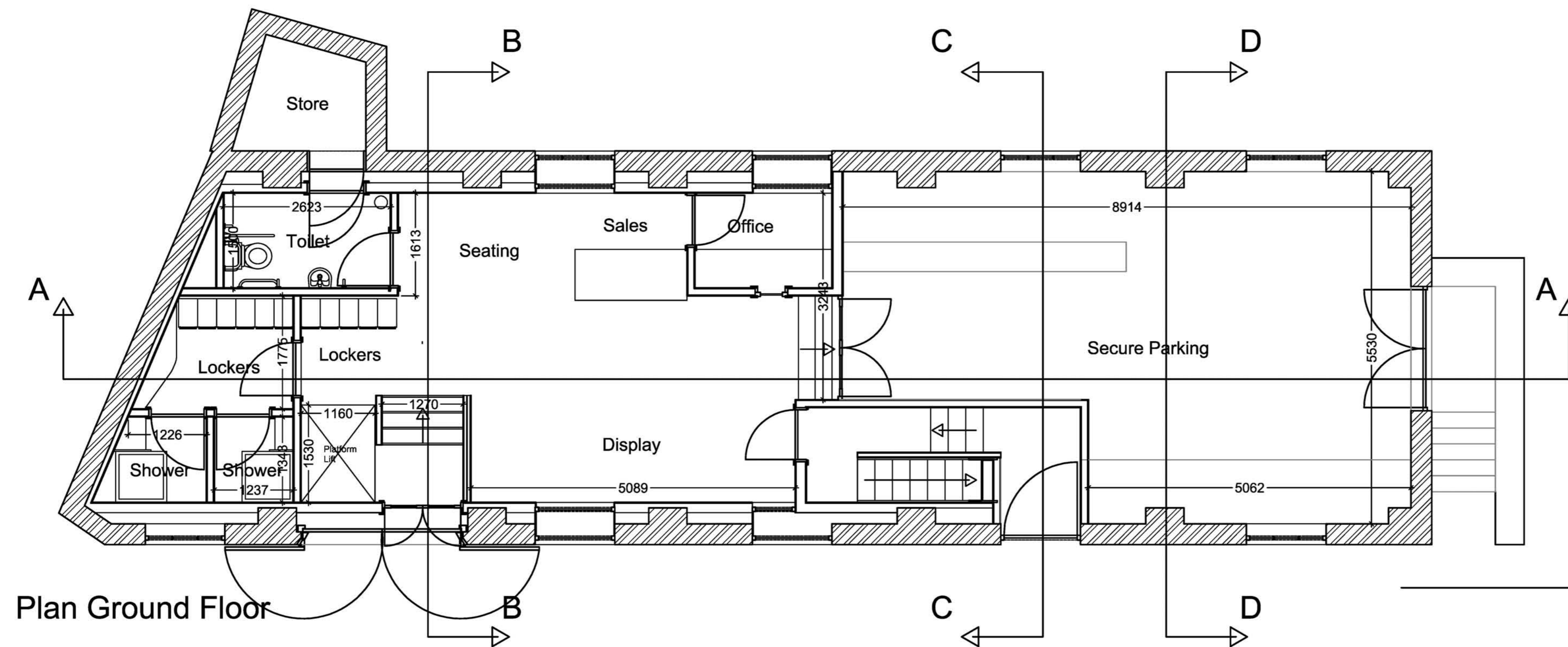
Section DD



Plan First Floor



Section CC



Plan Ground Floor



Section BB

Drawing Number:  
LSS/010  
Drawing date:  
06 November 2007  
Revision:  
F  
Revision date:  
20 May 2009  
Drawn by:  
Phil Bixby  
Scale:  
1:50

Project:  
Lendal Bike Hub  
Client:  
York Bike Rescue  
Drawing title:  
As Proposed

Project modelled and drawn using

